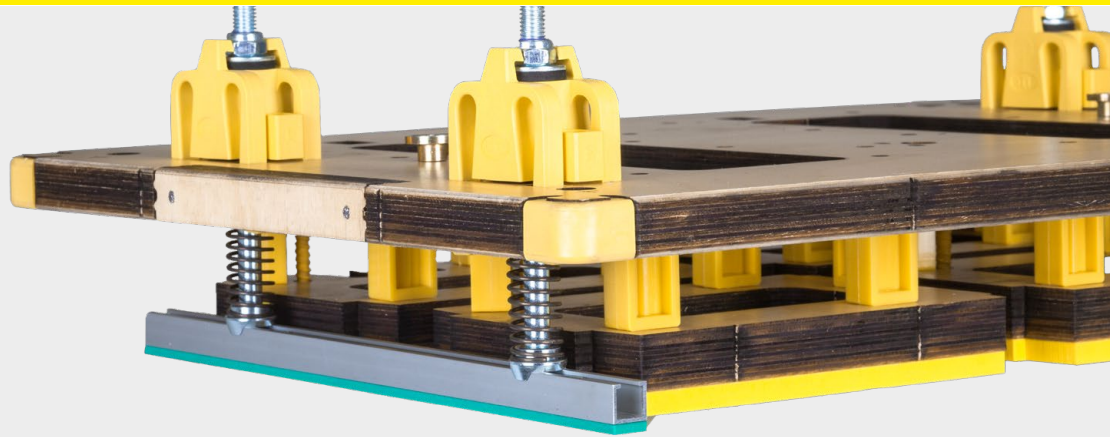


# CITO Blanking Components

Efficient material for the upper and lower blanking tool.  
For reliable fixing of the waste and perfect pile guidance.

- CITO SPIDER PRESSER
- Grid-Tape™ and Grid-Tape MAX
- CITO SPACER
- CITO MOUNTING SLEEVE
- CITO Quick Lock Safety Screw
- CITO Ejection Material for pusher blocks
- PROTECTOR
- CITO Ejection Material for presser plates



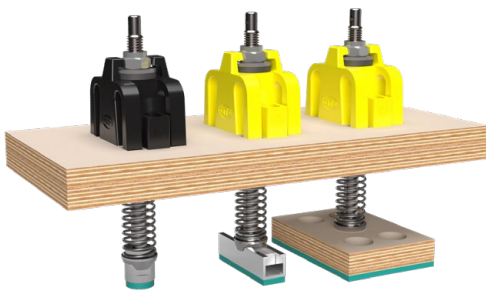
# CITO SPIDER PRESSER

For reliable fixing of the lateral waste and waste grid for layouts with blank separation cut.

CITO SPIDER PRESSER has been developed specifically for use in the upper blanking tool.



CITO SPIDER PRESSER is a complete package consisting of a CITO SPIDER PRESSER RAIL (yellow) and CITO SPIDER PRESSER SPOT (black), suitable rails and perfectly matched rubbering. The distinct colours of the product variants make handling easy and reliable for the user.

In addition, the height of the CITO SPIDER PRESSER can be adjusted individually. And a choice of high-quality components ensures maximum machine performance of up to 12,000 sheets per hour and a long tool life.



The advantages at a glance:

- Reliable blanking
- Complete solution with special rubbering
- Adjustable height
- Easy and secure handling thanks to colour-coded variants
- Robust components for long-lasting tools
- Maximum machine performance of up to 12,000 sheets per hour

	Description	Colour	Unit	Order no.
	CITO SPIDER PRESSER SPOT	Black	25 pcs.	BKP00004
	CITO SPIDER PRESSER RAIL	Yellow	25 pcs.	BKP00005
	CITO SPIDER PRESSER SPOT (US version, plywood 15.9 mm   5/8")	Black	25 pcs.	BKP00006
	CITO SPIDER PRESSER RAIL (US version, plywood 15.9 mm   5/8")	Yellow	25 pcs.	BKP00007
	CITO PRESSER RAIL for CITO SPIDER PRESSER Length 1500 mm   59.06"	Silver	10 pcs.	BKP00008
	Gasket for CITO PRESSER RAIL 650 x 3 mm	Green	25 pcs.	BKP00009



# Grid-Tape™ and Grid-Tape MAX

For perfect pile guidance in the delivery of your blank separation station.



The advantages at a glance:

- Great time savings of up to 90 % thanks to precise assembly in a matter of seconds
- Constant pile guidance in the delivery for efficient handling on the folder-gluer
- Long service life through robust material – more than 1,000,000 impressions
- Grid-Tape MAX optimally suited to metal grids of 3.00 to 6.00 mm thickness

Product properties

- Metal-free material – suitable for use with food packaging
- Highly-efficient adhesive – also suitable for greasy steel and plastic
- Register lines – for quick and accurate fitting



Grid-Tape MAX

Grid-Tape MAX is optimally suited to all double-cut layouts, where diemakers had to weld 3.00 to 6.00 mm thick steel onto the metal grid.

Description	Dimensions (W × L)	Total thickness steel	Unit	Order no.
Grid-Tape™	25 × 184 mm	0.6 mm	200 pcs.	BJC01050
Grid-Tape MAX 3	25 × 184 mm	3.0 mm	100 pcs.	BJC01063
Grid-Tape MAX 4	25 × 184 mm	4.0 mm	75 pcs.	BJC01064
Grid-Tape MAX 5	25 × 184 mm	5.0 mm	60 pcs.	BJC01065
Grid-Tape MAX 6	25 × 184 mm	6.0 mm	50 pcs.	BJC01066



## CITO SPACER

The CITO SPACER is used to keep a reliable distance between the upper blanking tool and the pusher blocks.

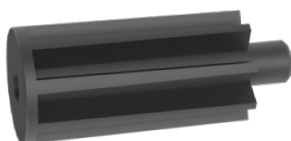
We recommend the CITO MOUNTING SLEEVE for secure screwing of the pusher blocks as an ideal addition.



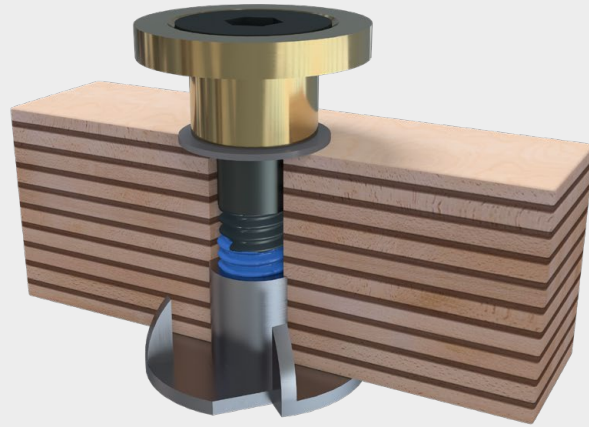
Description	Dimensions	Colour	Unit	Order no.
CITO SPACER for pusher blocks, rectangular	Total length 53 mm Spacing 30 mm	Yellow	500 pcs.	BLC07013

## CITO MOUNTING SLEEVE

The CITO MOUNTING SLEEVE for blanking tools is optimally suited for use in combination with the CITO SPACER for pusher blocks. It fixes the pusher block by screwing. The pusher block is held in position and thus smooth production flow is ensured.



Description	Dimensions	Colour	Unit	Order no.
CITO MOUNTING SLEEVE for pusher blocks	Total length 36 mm Distance 30 mm	Black	400 pcs.	BLC07008



# CITO Quick Lock Safety Screw

## The clever safety screw for blanking and stripping

CITO Quick Lock Safety Screw can be used both for the upper blanking tool and for the upper stripping board.

The screw is fully-assembled and there is no assembly work. Use a hexagonal spanner size 6 mm to screw in the screw to the surface of the wood so that the head remains rotatable. The tool can be pushed in easily and does not catch.

Thanks to the threadlocker coating, additional locking with a nut is not necessary. This simplifies the assembly.

Can be used for wood from 15 mm to 18 mm.

The advantages at a glance:

- Already assembled
- Rotatable head
- Easy pushing in of the tool
- Threadlocker coating

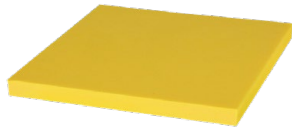


Description	Colour	Unit	Order no.
CITO Quick Lock Safety Screw, M6	Black	50 pcs.	BLC06018



# CITO Ejection Material for pusher blocks

Proven and popular ejection material especially developed for cutting dies.



The advantages at a glance:

- Simple optical quality control through colour-coding
- Reduction of cutting pressure in the machine
- Fewer nicks and faster sheet transfer
- UV and ageing-resistant material
- Exact positioning and residue-free removal of the ejection material thanks to EasyFix technology
- Certified as safe for the production of folding boxes for food packaging

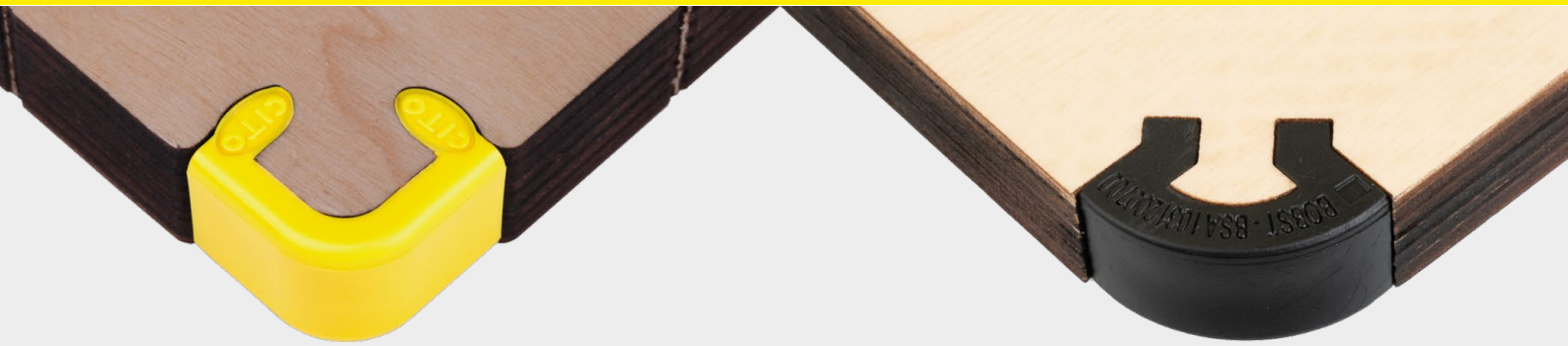


CITObject F



Description	Dimensions (L × W × H)	Colour	Order no.	EasyFix Order no.
CITObject F 25 YELLOW	1000 × 970 × 7 mm	Yellow	BPC00610	BPC01610

Unit: 1 plate



# PROTECTOR

CITO PROTECTOR and SOFT CORNER PROTECTOR protect the corners of the cutting die from damage during transport or when placing it into or removing it from storage. Available for three die board thicknesses.

The advantages at a glance:

- 100 % break-proof material
- No damage to corners of cutting dies
- Makeready times on the press are considerably reduced as no rework is necessary
- Reduced risk of injury to staff
- A mark of quality for the application of CITO technology in the cutting die

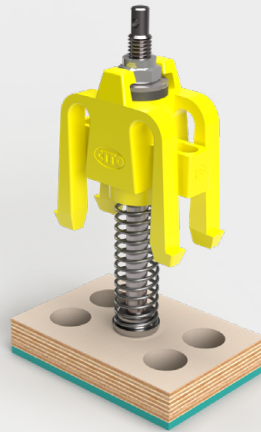


Description	Die board thickness	Unit	Order no.
CITO PROTECTOR	18 mm	500 pcs.	BQK00003

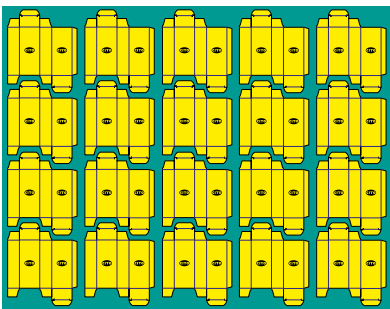


## SOFT CORNER PROTECTOR

Description	Die board thickness	Unit	Order no.
SOFT CORNER PROTECTOR	18 mm	200 pcs.	BQK00043



# CITO Ejection Material for presser plates



Proven and popular ejection material especially developed for cutting dies.

The advantages at a glance:

- Simple optical quality control through colour-coding
- UV and ageing-resistant material
- Exact positioning and residue-free removal of the ejection material thanks to EasyFix technology
- Certified as safe for the production of folding boxes for food packaging

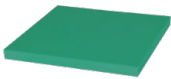



CITO Polytop











CITObject F



	Description	Dimensions (L × W × H)	Order no.
	CITO Polytop 35 GREEN EasyFix	658 × 380 × 3 mm	BPP02505
	CITObject F 45 ORANGE EasyFix	990 × 780 × 3 mm	BPC01645

Unit: 1 plate



	Description	Colour	Unit	Order no.
	CITO SPIDER PRESSER SPOT	Black	25 pcs.	BKP00004
	CITO SPIDER PRESSER RAIL	Yellow	25 pcs.	BKP00005
	CITO SPIDER PRESSER SPOT (US version, plywood 15.9 mm   5/8")	Black	25 pcs.	BKP00006
	CITO SPIDER PRESSER RAIL (US version, plywood 15.9 mm   5/8")	Yellow	25 pcs.	BKP00007
	CITO PRESSER RAIL for CITO SPIDER PRESSER Length 1500 mm   59.06"	Silver	10 pcs.	BKP00008
	Gasket for CITO PRESSER RAIL 650 × 3 mm	Green	25 pcs.	BKP00009
	Grid-Tape™ 25 × 184 mm, Total thickness steel 0.6 mm	Yellow	200 pcs.	BJC01050
	Grid-Tape MAX 3 25 × 184 mm, Total thickness steel 3.0 mm	Yellow	100 pcs.	BJC01063
	Grid-Tape MAX 4 25 × 184 mm, Total thickness steel 4.0 mm	Yellow	75 pcs.	BJC01064
	Grid-Tape MAX 5 25 × 184 mm, Total thickness steel 5.0 mm	Yellow	60 pcs.	BJC01065
	Grid-Tape MAX 6 25 × 184 mm, Total thickness steel 6.0 mm	Yellow	50 pcs.	BJC01066
	CITO SPACER for pusher blocks, rectangular Total length 53 mm, Spacing 30 mm	Yellow	500 pcs.	BLC07013
	CITO MOUNTING SLEEVE for pusher blocks Total length 36 mm, Distance 30 mm	Black	400 pcs.	BLC07008
	CITO Quick Lock Safety Screw M6	Black	50 pcs.	BLC06018
	CITOject F 25 YELLOW 1000 × 970 × 7 mm	Yellow	1 plate	BPC00610 EasyFix: BPC01610
	CITO PROTECTOR Die board thickness 18 mm	Yellow	500 pcs.	BQK00003
	SOFT CORNER PROTECTOR Die board thickness 18 mm	Black	500 pcs.	BQK00043
	CITO Polytop 35 GREEN EasyFix 658 × 380 × 3 mm	Green	1 plate	BPP02505
	CITOject F 45 ORANGE EasyFix 990 × 780 × 3 mm	Orange	1 plate	BPC01645
	Centerline Centering Block for BOBST Quick Clamping System	Red	100 pcs.	BLC02010



More information:  
[www.cito.de/blanking](http://www.cito.de/blanking)