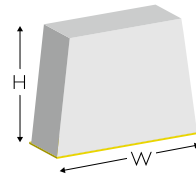


Application

The CITO BALANCE PROFILE prevents tilting of the platen press and thus ensures a more uniform cutting result over the whole cutting sheet with reduced cutting pressure.

By using the CITO BALANCE PROFILE, the makeready time is reduced significantly and the machine performance and output are clearly increased.

The uniform loading of the cutting rules, achieved by using the CITO BALANCE PROFILE, thus not only increases the life of the cutting die, but also protects the cutting plate. The quality of the creases is identical with every blank. This makes readjustment when gluing the packaging superfluous, which in turn increases output and quality.



Dimensions (L x W x H)	Colour	Order no.
658 x 20 x 8 mm	GREY / RED	BPB02608
658 x 20 x 10 mm	GREY / BLUE	BPB02610
658 x 20 x 11 mm	GREY / BLACK	BPB02611
658 x 20 x 13 mm	GREY / GREEN	BPB02613

Unit: 38 strips / 25 m

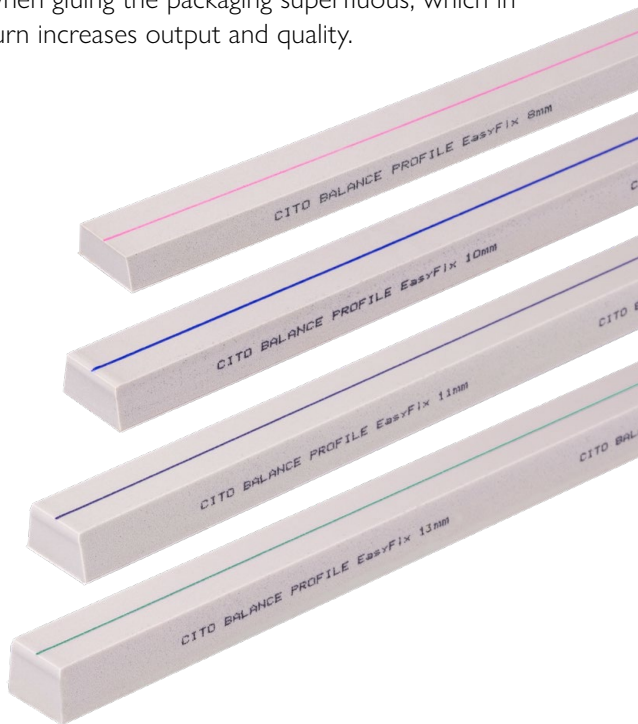


cito.de/balance

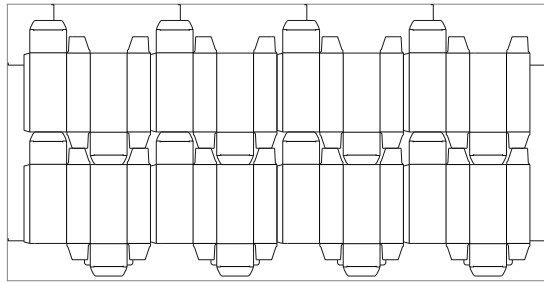
CITO-SYSTEM GmbH
 Haimendorfer Str. 37+46
 90571 Schwaig bei Nürnberg/Germany
 Phone +49 911 95885-0 • info@cito.de • www.cito.de

CITO BALANCE PROFILE

- less makeready time
- perfect diecutting results
- more output
- higher quality
- longer tool lives



Cut the sheet

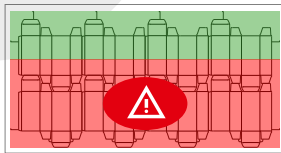
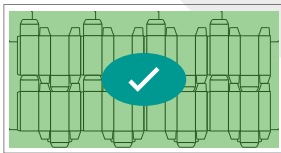


Check the sheet

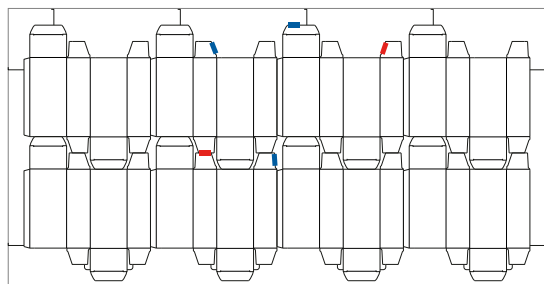
Do all knives cut uniformly?

YES

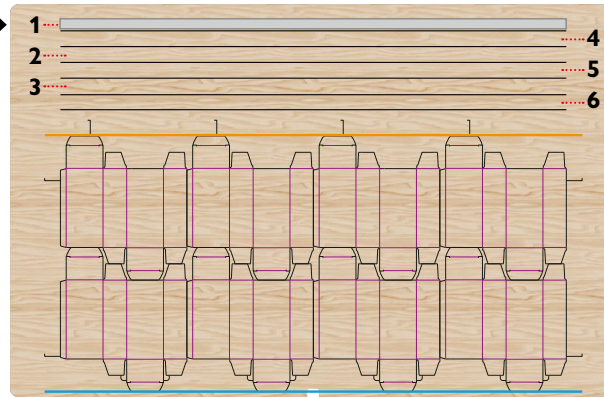
NO



Makeready



Gluing the CITO BALANCE PROFILE



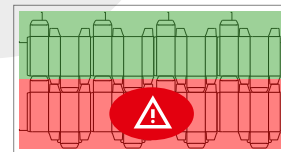
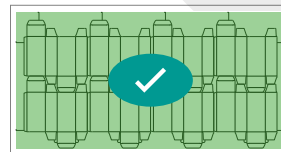
One strip can suffice to achieve the required result.

Cut & check the sheet

Do all knives cut uniformly?

YES

NO

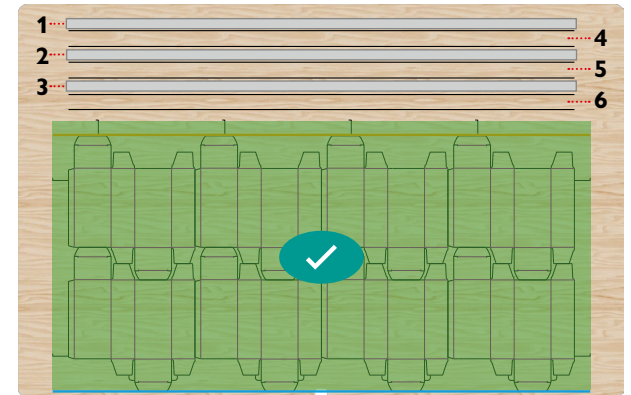


Gluing an additional CITO BALANCE PROFILE

The CITO BALANCE PROFILE must be glued on across the whole blank width between or next to the pressure compensation lines.

The distance between the pressure compensation lines must not be less than 21 mm.

The CITO BALANCE PROFILE does not replace the pressure compensation lines in the tool.



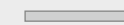
KEY:



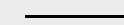
Material cut



Material not cut



CITO BALANCE PROFILE



Pressure compensation line



Last knife



First knife